

**Aladdin Light Is One Comfort  
and Convenience the Whole  
Family Will Enjoy**

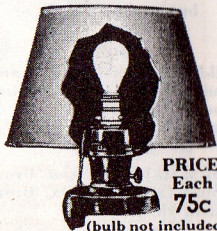
**T**ESTS conducted by the foremost lighting engineers show Aladdin light a near approach to actual daylight in quality. Therefore it is most suitable for the human eye. Its soft mellow glow makes it possible to read, write, sew or study by Aladdin light hour after hour with less eye fatigue. It has made it possible for thousands of aged persons to again read in comfort at night, and its use is a preventative against eyestrain due to poor light for the young. No home where kerosene must be used but what would be a brighter, happier, cheerier place in which to live when Aladdin lighted.

Good Light is as important as good air or good food. In fact there is nothing that adds more to the healthfulness, happiness, comfort and convenience of a home than good light. Eyesight is a priceless possession and every possible safeguard should be used to preserve and protect it. For many years the old-style yellow-flame oil light has been the only light available for homes without electricity, and the damage it has done to the eyes of millions cannot be figured even in billions. It's small wonder that the Aladdin Mantle Lamp with its abundance of modern white light, its amazing economy, its safety and simplicity has won its way into the hearts and homes of over seven millions of users throughout the world.

**NEW • PRACTICAL  
Aladdin Converter**

Changes an Aladdin into an Electric Lamp in a Jiffy

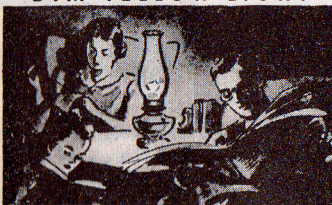
Think of it! Without destroying the efficiency of your Aladdin as a kerosene lamp convert it into an electric lamp or again in a moment's time if you desire. It gives you two beautiful lamps in one. If your power fails, just slip the converter out, put on the Aladdin mantle and chimney—and there you are!—the same beautiful modern white light of your Aladdin—the light that never fails. If your home is now wired for electricity, bring out your old reliable Aladdins again, and convert them into electric. Even though you expect to eventually have electricity you can enjoy Aladdin white light meanwhile, for when it comes, insert this simple converter, and presto—a beautiful electric lamp.



PRICE,  
Each  
**75c**

(bulb not included)

**DON'T HUDDLE UNDER  
DIM YELLOW LIGHT**



**Relax, Spread Out  
and Be Comfortable**

**With Aladdin  
MODERN  
WHITE LIGHT**



**Aladdin Brings You All of These  
ADVANTAGES:**

- ★ Burns 50 Hours on a Gallon of Kerosene . . . Lights Instantly with a Match . . . Uses 94% Air—only 6% Kerosene . . . Is Absolutely Safe—Can't Explode . . .
- ★ Requires No Pump or Pumping . . . Simplicity Itself—a Child Can Run It . . . 60 Candle Power of Modern White Light . . . Noiseless—Still—Quiet . . . Sanitary
- ★ —No Smoke—No Odor . . . No Generating—No Generator . . . Durable—Lasting—Dependable . . . Beautiful and Decorative.

**DON'T WAIT — Get Yours Now—Today**

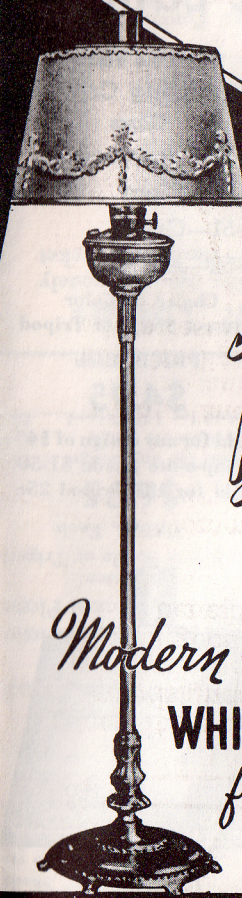
Form 42F

Printed in U.S.A.

# Aladdin

Reg. U.S. Pat. Off. and Canada

## MANTLE Lamps



*for*  
**Better**  
**LIGHT  
SIGHT  
LESSONS**

*Modern*  
**WHITE Light**  
*from* **KEROSENE**  
(COAL OIL)



# Aladdin

Reg. U.S. Pat. Off. and Canada

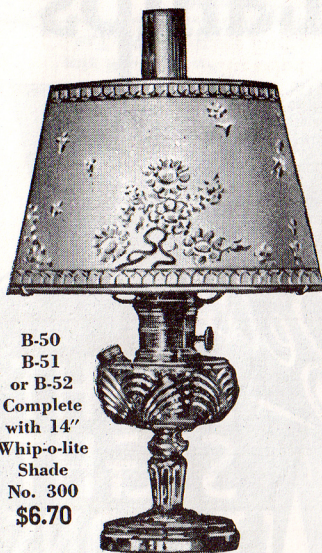
**KEROSENE**  
(Coal Oil)

# Mantle Lamps

**MAKE**  
Bright • Happy • Healthful • Cheerful  
**HOMES**

**GIVE**  
Life-long Service and Priceless Comfort  
and Convenience

## Aladdin Table Lamps



In One Piece  
Sparkling Crystal  
Glass  
Nickle Metal Trimmed  
B-50—Clear  
B-51—Green  
B-52—Amber  
Choice of Color  
without Shade or Tripod  
PRICE, Each  
**\$4.95**

B-50  
B-51  
or B-52  
Complete  
with 14"  
Whip-o-lite  
Shade  
No. 300  
\$6.70

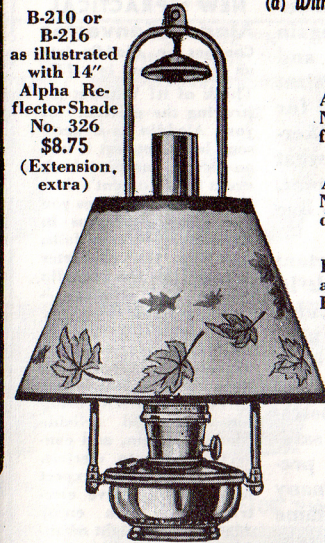
Add for any design of 14"  
Whip-o-lite Shade \$1.50  
Add for 14" Tripod 25c

**O**NE of the greater of all universally useful and practical devices developed in the last century is the Aladdin Kerosene (coal-oil) Mantle Lamp. As a scientific achievement it is singularly outstanding. Until its advent practically all the rural and small town homes were lighted with the dim, dingy, yellow glow of the old fashioned open flame kerosene lamp. Today over 7,000,000 persons enjoy the blessings and comfort of the abundance of Aladdin's pure soft mellow white light, and no other device can boast of a more enthusiastic host of satisfied users.

The Aladdin Kerosene Mantle Lamp has many features; it gives 60 candle power of modern white light, and burns 50 hours on a gallon of kerosene, evidence of high efficiency and economy. Its light is quiet, odorless, and smokeless. Its operation exceedingly simple, and it is absolutely safe—cannot explode. And all is combined in a beautiful decorative lighting device of which you will be indeed proud. The importance of a good light in the home cannot be stressed too much. Its presence brings cheer and happiness, while poor light is dismal and depressive. Good light is essential for reading, sewing, and studying especially in homes where children have home work to do.

The abundance, softness, quietness and steadiness of Aladdin White Light makes it the ideal home light, and no home where the old style open-flame lamp is used can afford to be without one or more. Visit your local Aladdin dealer and get a demonstration. The Aladdin itself is its own best salesman.

## Aladdin Hanging Lamps



B-210 or  
B-216  
as illustrated  
with 14"  
Alpha Re-  
flector Shade  
No. 326  
\$8.75  
(Extension,  
extra)

(a) With Nu-Type Hangers  
but without Shades or  
Extension Fixtures

**B-210**  
All Metal Fount Lamp, and  
Nu-Type Hanger, both Nickel  
finish .....\$7.25

**B-216**  
All Metal Fount Lamp and  
Nu-Type Hanger, both Oxi-  
dized Bronze .....\$7.25

**B-222**  
Ivory Alacite Fount Lamp,  
and Nu-Type Nickel finish  
Hanger .....\$6.25

ADD EXTRA for SHADE  
and TRIPOD  
For any design 14" Whip-  
o-lite or Alpha Shade  
Adaptable .....\$1.50  
For No. 3 Extension Fix-  
ture .....\$2.75

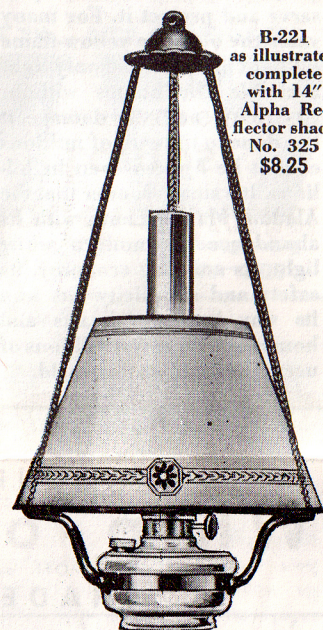
(b) With  
Chain-Type Hangers  
but without Shade or  
Extension Fixture

**B-219**  
All-Metal Nickel Fount Lamp,  
and Chain Hanger in Black  
and Nickel finish.  
Complete .....\$7.75

**B-220**  
All-Metal Oxidized Bronze  
Fount Lamp, and Ox. Bronze  
Chain Hanger.  
Complete .....\$7.75

**B-221**  
Ivory Alacite Fount Lamp, and  
Black and Nickel Chain Hanger.  
Complete .....\$6.75

ADD EXTRA for SHADE or  
EXTENSION FIXTURE  
For any design 14" Whip-  
o-lite or Alpha Reflector Shade  
adaptable .....\$1.50  
For No. 3 Extension  
Fixture .....\$2.75

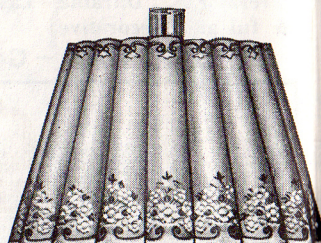


B-221  
as illustrated  
complete  
with 14"  
Alpha Re-  
flector shade  
No. 325  
\$8.25

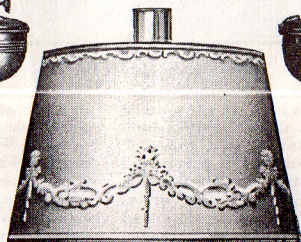
## Aladdin Floor Lamps



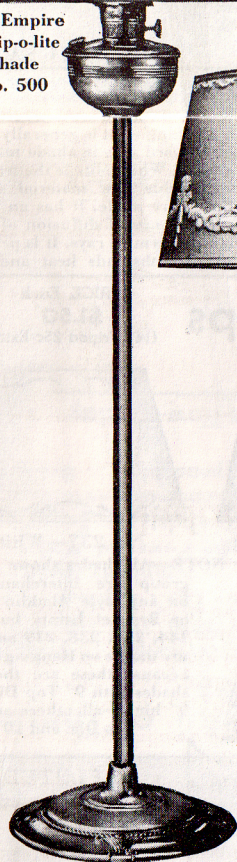
16" Empire  
Whip-o-lite  
Shade  
No. 500



17" Fluted  
Whip-o-lite  
Shade  
No. 505



16" Empire  
Whip-o-lite  
Shade  
No. 450

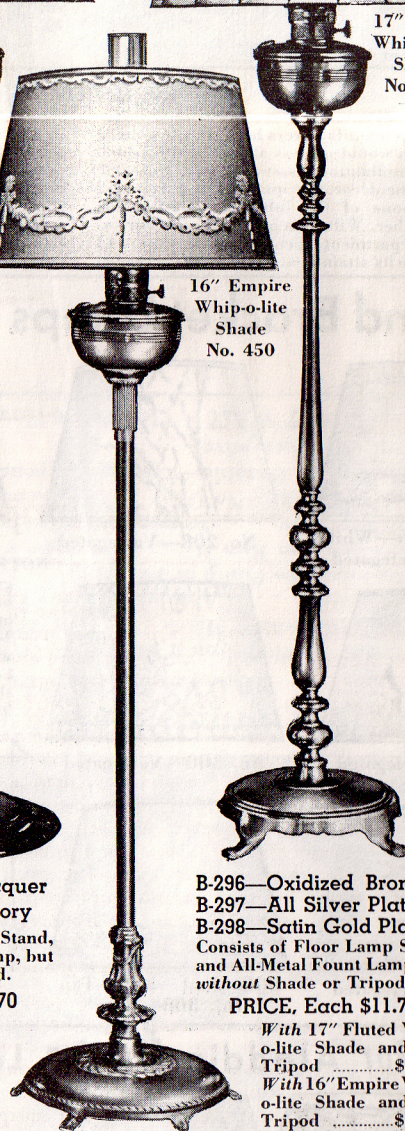


B-292—Bronze Lacquer  
B-293—Antique Ivory

Consists of Floor Lamp Stand,  
and All-Metal Fount Lamp, but  
without Shade or Tripod.

PRICE, Each \$8.70

With 16" Empire Whip-  
o-lite Shade and 16"  
Tripod .....\$10.95  
With 17" Fluted Whip-  
o-lite Shade and 14"  
Tripod .....\$11.70



B-294—Bronze and Gold  
LACQUER  
B-295—Ivory and Gold  
LACQUER

Consists of Floor Lamp Stand and All Metal  
Fount Lamp but without Shade or Tripod.  
PRICE, Each \$10.20

With 17"  
Fluted  
Shade and  
Tripod  
\$13.20

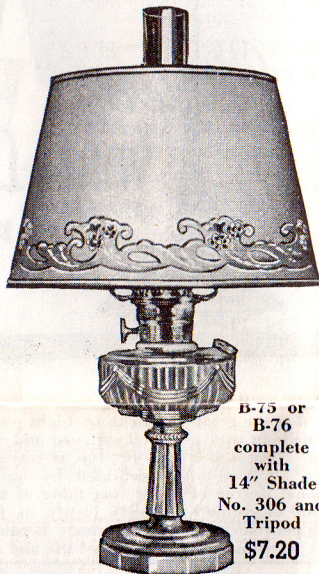
B-296—Oxidized Bronze  
B-297—All Silver Plate  
B-298—Satin Gold Plate  
Consists of Floor Lamp Stand,  
and All-Metal Fount Lamp, but  
without Shade or Tripod.  
PRICE, Each \$11.70

With 17" Fluted Whip-  
o-lite Shade and 14"  
Tripod .....\$14.70  
With 16" Empire Whip-  
o-lite Shade and 16"  
Tripod .....\$13.95

In One Piece  
Alacite or Colored  
Crystal  
Rose Gold Metal Trimmed  
B-75—Ivory Alacite  
B-76—Blue Crystal  
Choice  
without Shade or Tripod

PRICE, Each  
**\$5.45**

Add for any design of 14"  
Whip-o-lite Shade \$1.50  
Add for 14" Tripod 25c



B-75 or  
B-76  
complete  
with  
14" Shade  
No. 306 and  
Tripod  
\$7.20

In All-Metal  
Heavily Plated and  
Polished

B-137—In Bronze Plate  
B-138—In Nickel Plate

Choice  
without Shade or Tripod  
PRICE, Each

**\$6.95**

Add for any design of 14"  
Whip-o-lite Shade .....\$1.50  
Add for 14" Tripod.....25c



B-137 or  
B-138  
complete  
with 14"  
Whip-o-lite  
Shade  
No. 144  
\$8.70

## Aladdin Fount Lamps

Complete Lighting Units. Sold Separately  
or as used with Aladdin Hanging, Bracket  
and Floor Lamps.

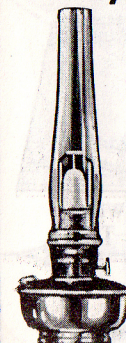
B-153—Ivory Alacite Fount,  
Silver trimmed, and Nickel  
Burner .....\$4.75

Lighting Unit for B-222, B-221  
and B-179

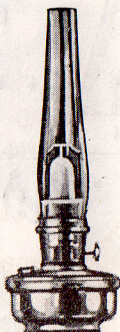
B-160—Nicked Brass Fount,  
and Nickel Burner.....\$5.75  
Lighting Unit for B-210, B-219, B-187  
and B-297

B-161—Rose-Gold Brass Fount,  
and Rose-Gold Burner.....\$5.75  
Lighting Unit for B-293, B-295 or  
B-298

B-162—Ox. Bronze Plate Brass  
Fount, & Ox. Bronze Burner.....\$5.75  
Lighting Unit for B-216, B-220, B-188,  
B-292, B-294 or B-296



B-160-Nickel  
B-161-Rose-  
Gold  
B-162-Bronze



B-153-Ivory  
Alacite

Price quoted includes Complete Burner,  
1 Lox-on Mantle and 1 Lox-on Chimney

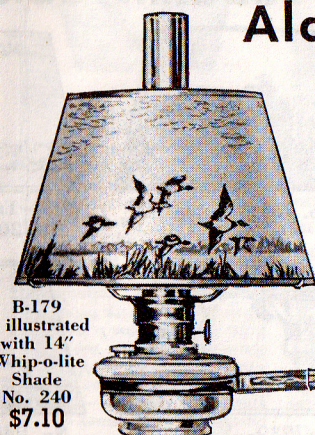
## Aladdin Bracket Lamps

with SWINGING BRACKET

**B-179**

Consists of Ivory Alacite Fount  
Lamp, and Ivory and Nickel  
Swinging Bracket (Shade and  
Tripod Extra) .....\$5.35

Add Extra for Shade  
and Tripod  
For any design 14" Whip-  
o-lite or Alpha Reflector  
Shade add .....\$1.50  
For 14" Tripod, add 25c



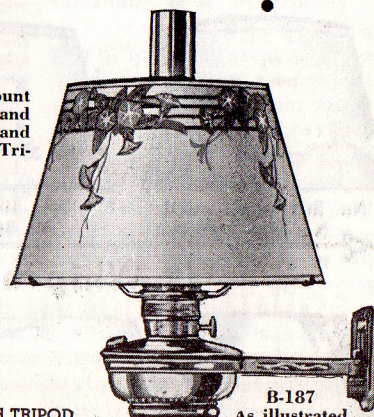
B-179  
as illustrated  
with 14"  
Whip-o-lite  
Shade  
No. 240  
\$7.10

**B-187**

Consists of All-Metal Fount  
Lamp in Nickel finish, and  
Swinging Bracket in Ivory and  
Nickel finish (Shade and Tri-  
pod Extra) .....\$6.35

**B-188**

Consists of All-Metal  
Fount Lamp, and Swing-  
ing Bracket, both in Oxi-  
dized Bronze finish,  
(Shade and Tripod Extra)  
\$6.35



B-187  
As illustrated  
with 14" Whip-  
o-lite Shade  
No. 239 \$8.10

ADD EXTRA for SHADE and TRIPOD  
Any design 14" Whip-o-lite or Alpha  
Shade, add .....\$1.50  
For 14" Tripod, add.....25c



# Aladdin Whip-o-lite

Reg. U. S. Pat. Off. and Canada

SHADES

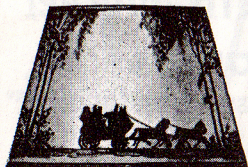
For years lamp manufacturers have sought a shade material which would possess all the lighting qualities of fine illuminating glassware and at the same time possess the decorative qualities of parchment paper with none of the inherent objectionable features of either. With this object in view our experimental department spent years of time and much money in its attainment, and finally succeeded

in reaching what is generally regarded as the greatest forward step in shade material made in over a century. Whip-o-lite is the trade name given to this remarkable new material of which all Aladdin shades are made. It has an exceptional degree of transparency of diffusion of light and of elimination of harmful rays. It is practically permanent in color. Withstands heat and resists warping and

buckling. Light passed thru Whip-o-lite is diffused and softened and is very restful to the eyes. Whip-o-lite, too, is very decorative in texture, and when decorated by our expert designers becomes a striking thing of beauty. A Whip-o-lite shade will easily justify its price over the ordinary parchment shade because of its greater charm, in its increased life and satisfaction.

SIZE—All are 14"  
Bottom Diam. (See Note).

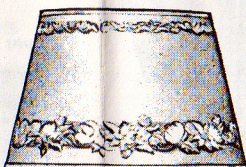
## For Aladdin Table and Bracket Lamps



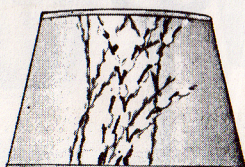
No. 144—Orange & Black



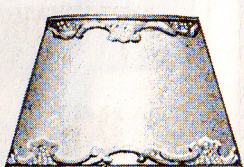
No. 201—Variegated



205—Tan 206—White  
No. 207—Variegated



No. 208—Variegated



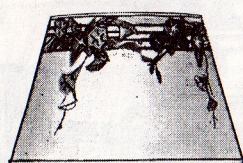
PRICE, Each  
\$1.50  
(14" Tripod 25c Extra)

No. 237—White

NOTE—All shades shown in this group are interchangeable on any style Aladdin Table or Bracket Lamp, but only 144, 237, 238, 239 and 240 are usable on Hanging Lamps because these are the only shades with 9" Top Dia. and 9" high—all others are 10" Top Dia. and 10" high.



No. 238—Variegated



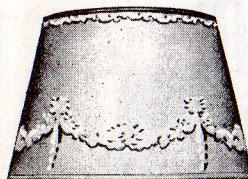
No. 239—Variegated



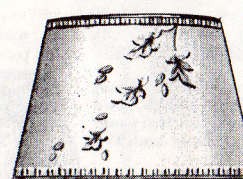
No. 240—Variegated



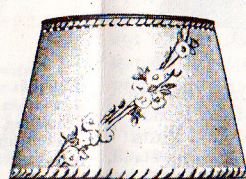
No. 300—Variegated



No. 301—Variegated  
No. 302—White



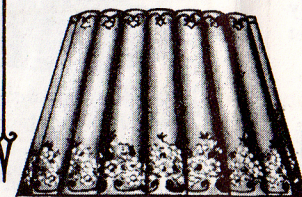
No. 303—White  
No. 304—Tan



No. 305—Variegated



306—Red 307—Tan  
No. 308—Blue

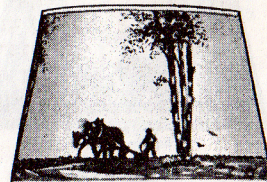


No. 505—Variegated

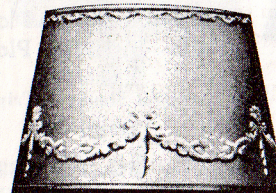
## For Aladdin Floor Lamps

EMPIRE

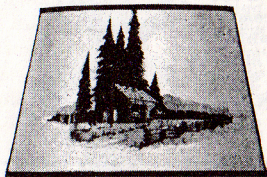
SIZE—16" Bottom  
12" Top—10" high.



No. 451—Variegated



No. 450—Variegated



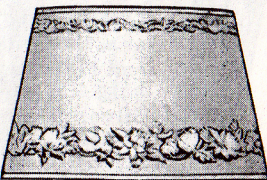
No. 500—Brown

PRICE, Each  
In EMPIRE  
\$2.00

(16" Tripod 25c Extra)

PRICE, Each  
In FLUTED  
\$2.75

(14" Tripod 25c Extra)



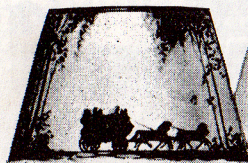
No. 503—White  
No. 504—Tan

## In Whip-o-lite

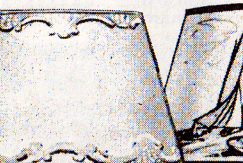
## For Aladdin Hanging Lamps

## In Alpha Paper

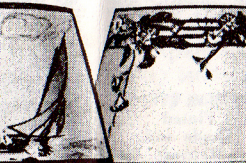
Reflector Type



No. 144  
Orange & Black



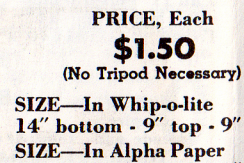
No. 237  
White



No. 238  
Variegated



No. 239  
Variegated



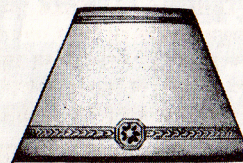
No. 240  
Variegated

PRICE, Each  
\$1.50

(No Tripod Necessary)

SIZE—In Whip-o-lite  
14" bottom - 9" top - 9" high

SIZE—In Alpha Paper  
14" bottom - 7" top - 9" high



No. 325—Green & Gold



No. 326—Variegated